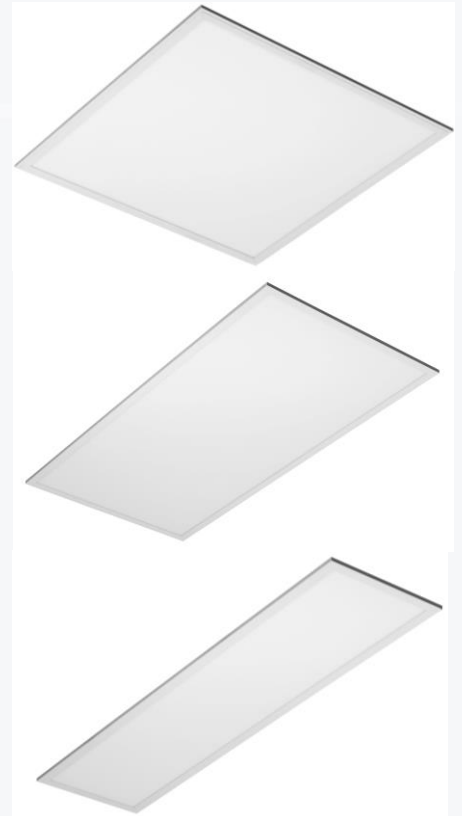
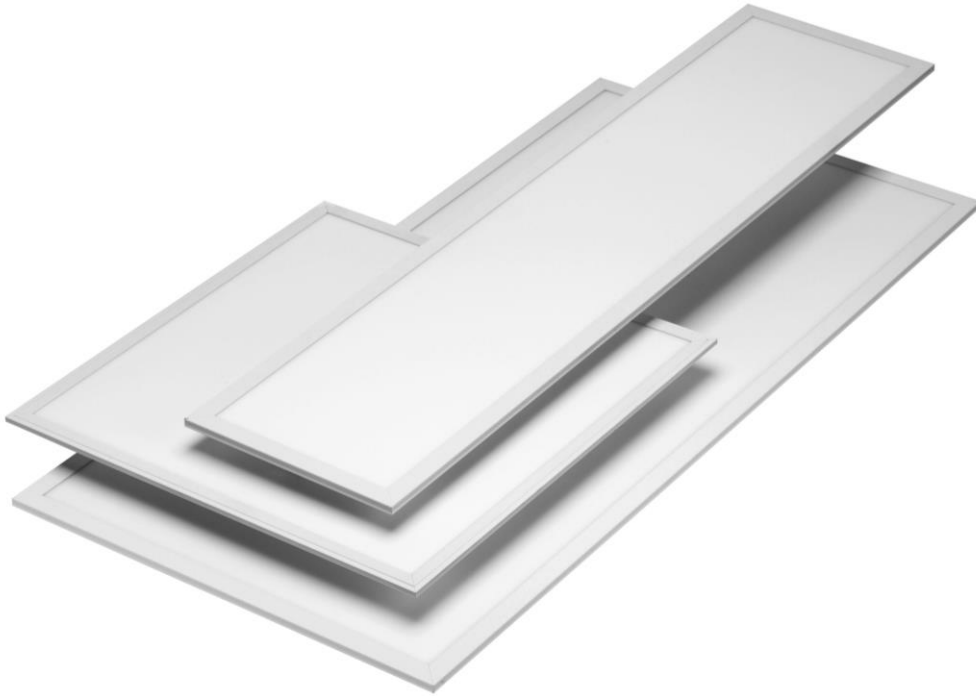




Earth One



Earth LED - Recessed direct panel luminaires using high quality LED modules and branded drivers for excellent product reliability and efficiency. They are suitable for general lighting in retail and commercial applications.

- 5 year driver warranty as standard .
- Emergency versions available upon request.
- Supplied in colour 3200K, 4200K or 6500K as standard.
- Standard model not suitable for dimming but dimmable versions are available upon request.
- Supplied fitted with European branded control gear
- Working temp -10 degrees to + 40 degrees.
- White trim as standard



Product Code	Description	Wattage	Lumen Output	Size
LEDP15/83	LED panel 300x300 colour 3200K	15w	1220	295x295x11
LEDP15/84	LED panel 300x300 colour 4200K	15w	1220	295x295x11
LEDP15/86	LED panel 300x300 colour 6500K	15w	1220	295x295x11
LEDP25/84	LED panel 600x300 colour 4200K	25w	2000	595x295x11
LEDP25/86	LED panel 600x300 colour 6500K	25w	2000	595x295x11
LEDP36/83	LED panel 600x600 colour 3200K	36w	2950	595x595x11
LEDP36/84	LED panel 600x600 colour 4200K	36w	2950	595x595x11
LEDP36/86	LED panel 600x600 colour 6500K	36w	2950	595x595x11
LEDP362/84	LED panel 1200x300 colour 4200K	36w	2950	1195x295x11
LEDP362/86	LED panel 1200x300 colour 6500K	36w	2950	1195x295x11
LEDP48/83	LED panel 600x600 colour 3200K	48w	3840	595x595x11
LEDP48/84	LED panel 600x600 colour 4200K	48w	3840	595x595x11
LEDP48/86	LED panel 600x600 colour 6500K	48w	3840	595x595x11
LEDPS482/86	LED panel 1200x150 colour 6500K	48w	3840	1195x145x11
LEDP482/84	LED panel 1200x300 colour 4200K	48w	3840	1195x295x11
LEDP482/86	LED panel 1200x300 colour 6500K	48w	3840	1195x295x11
LEDP70/84	LED panel 1200x600 colour 4200K	65w	5300	1195x595x11
LEDP70/86	LED panel 1200x600 colour 6500K	65w	5300	1195x595x11

- Lumen outputs are approximate and subject to change

Add to end of Product Code	Application
/D	1-10v Analogue Dimmable
/DALI	DALI Dimmable
/M3	3 Hour Emergency
Additional Item	Application
LEDP/SUSKIT	Suspension kit for panel
PSF600/600	600x600 LED panel surface mount frame
PSF1200/600	1200x600 LED panel surface mount frame
PSF1200/300	1200x300 LED panel surface mount frame
LEDP36RF	600x600 Recessing frame for plasterboard
LEDP/PBC	Surface mounting clips for use with plasterboard



For more information on our Tegral brand of products, please contact us

Tegral Lighting Ltd
Unit 4 Myson Way
Raynham Road Industrial Estate
Bishops Stortford
Herts, CM23 5JZ

Integral Lighting Ltd
Unit 99 Barrow Road
Dublin Ind Est
Glasnevin, Dublin 11



Tegral
Quality Lighting

E-mail: salesuk@tegral-lighting.com
Tel: +44 (0)1279 461888/908
Fax: +44 (0)1279 460115

sales@tegral-lighting.com
+353 (01) 8309684/85/86
+353 (01) 8309932

www.tegral-lighting.com